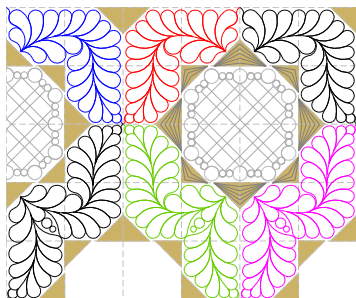
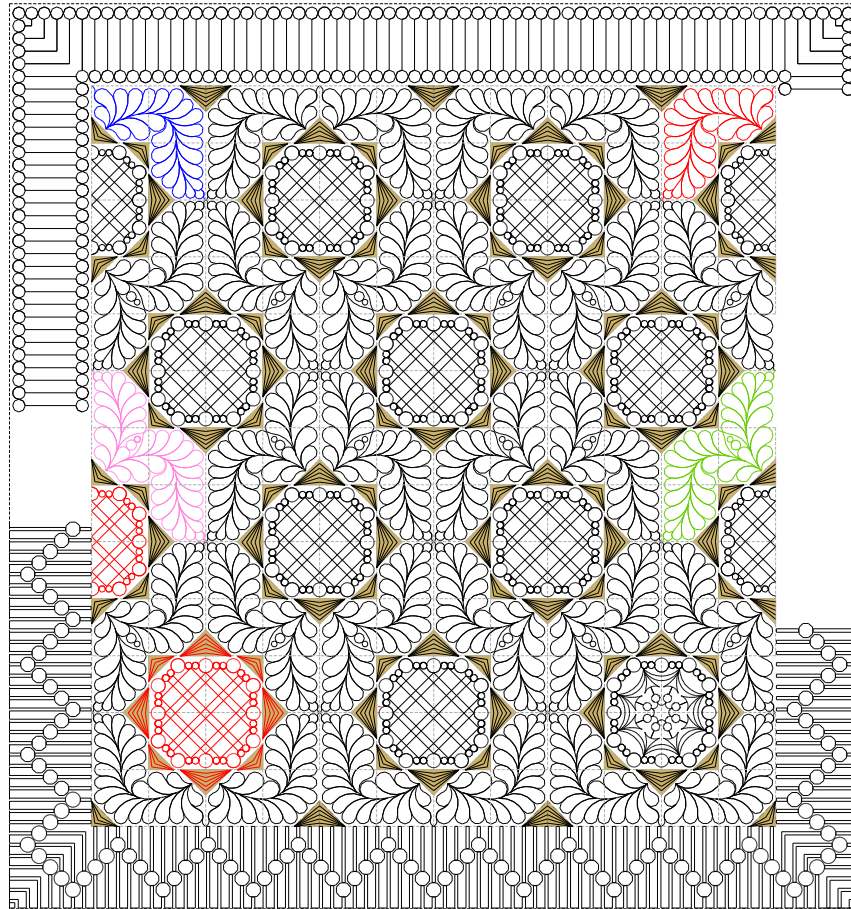


# Pecking Order by Missouri Star Quilts

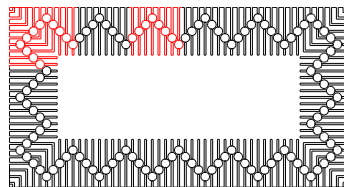
using quilting designs by Sharon Perry - [www.houseofcreations.biz](http://www.houseofcreations.biz)



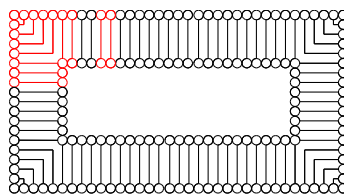
[Pecking Order a p2p \(4\)](#)

every second row of the main designs may have to be placed from right to left on the quilt - and then change the sewing order to sew out from left to right.

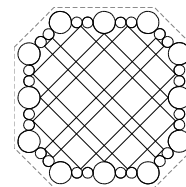
Innova machines - try flipping the design as you place.



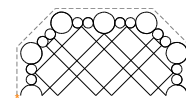
[Chevron Circles 5 bdr & cnr \(2\)](#)



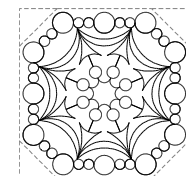
[Pearl Bars med bdr & cnr \(2\)](#)



[Many Corners octagon](#)

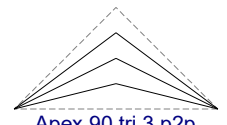


[Many Corners oct .5 p2psu](#)

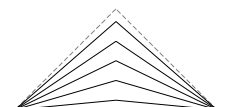


[Many Corners oct b](#)

Place as a square - using the corners of the coloured triangles as the corners of the square.



[Apex 90 tri 3 p2p](#)



[Apex 90 tri 5 p2p](#)

These designs alternate in the corners forming a circular design. They will need to be connected with a little straight line in order for them to sew continuously. (Statler Stitchers can do this by using the concatenation feature)